

# AirChef

Auto Wash

UTO.  
A NEW AIR. A BETTER AIR

**ESP** Electrostatic  
precipitator

Electrostatic precipitation technology for the efficient removal of smoke, grease, and odors in commercial kitchen exhaust systems, featuring an innovative automatic washing system.



# ESP AirChef

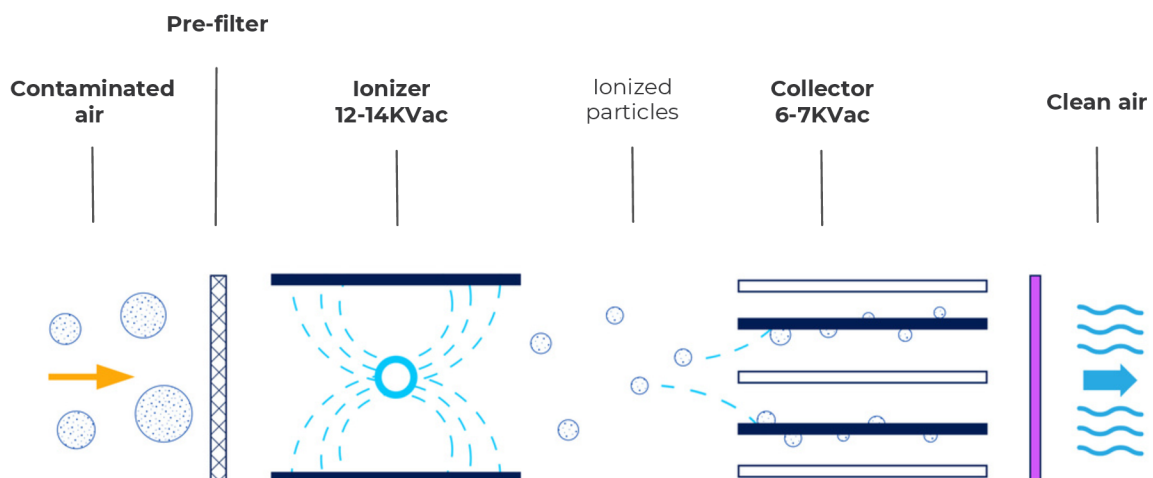


**UTO AirChef Auto Wash** units seamlessly integrate into kitchen exhaust ducts and can be modularly configured to adapt to any air volume requirement.

It features a washable aluminum mesh pre-filter, and its innovative ionizing section uses a high-intensity magnetic field to generate an electric charge of up to 14KVdc on dry and wet airborne particles. These charged particles are then attracted and collected by a set of collector plates with an electric charge of up to 7KVdc, which repel the particles toward grounded plates, where they adhere and remain until they are washed and removed.

It efficiently removes airborne particles as small as 0.01 microns with minimal pressure drop, making it widely used for capturing dust, oil mist, and kitchen smoke.

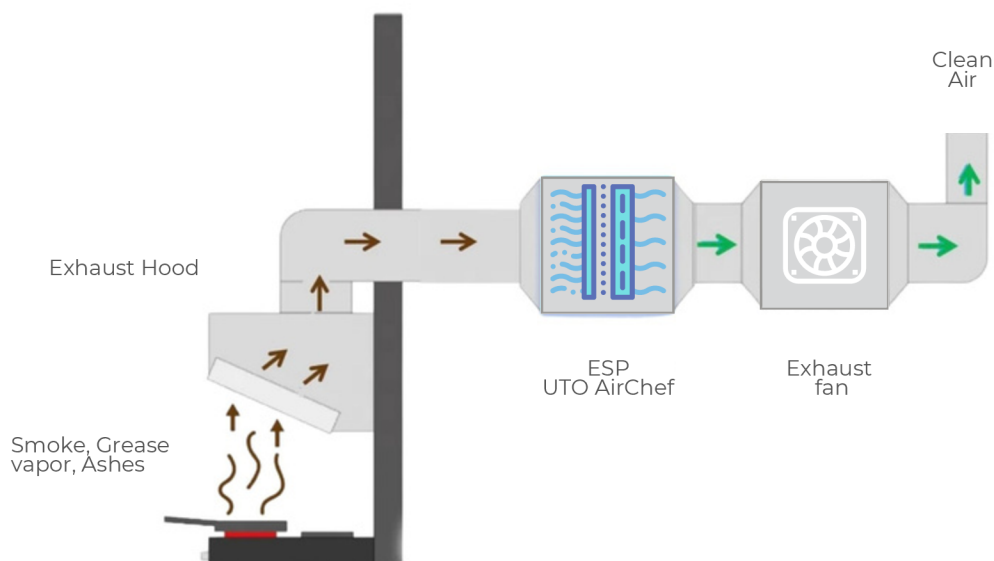
**AirChef AW** features an advanced automatic washing system designed to minimize maintenance costs by eliminating the need for specialized technicians. Equipped with an intuitive touchscreen display interface, it allows users to easily monitor system variables and schedule customized washing cycles, ensuring efficient operation tailored to the specific demands of the exhaust system.





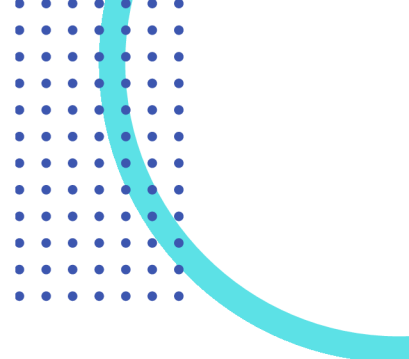
- The only unit with an **intelligent autonomous system** that optimizes power based on ionization cell saturation.
- Graphical interface (touchscreen display) that allows easy operation and scheduling of automatic wash cycles, along with other functions.
- Easy interlocking with the ventilation unit through the electrical contact in the protection breaker included in all UTO AirChef models.
- PIL (Permanent Indicator Light): LED indicator for power status, faults, and cleaning alerts.
- Auto Wash system featuring a hydraulic pump, detergent tank with level sensors, touchscreen display, control module, and installation accessories.

## Installation Overview





# Technical Specifications



	AirChef 2000	AirChef 4000	AirChef 6000
Airflow	800 - 2800 cfm	2800 - 5600 cfm	5600 - 8400 cfm
Static Pressure From	33 Pa / 0.13 inwg	33 Pa / 0.13 inwg	33 Pa / 0.13 inwg
Ionizer Voltage	12 a 14 KVdc	12 a 14 KVdc	12 a 14 KVdc
Collector Voltage	6 a 7 KVdc	6 a 7 KVdc	6 a 7 KVdc
Filtration Level	Merv 15	Merv 15	Merv 15
Particle Size	From 0.01 pm	From 0.01 pm	From 0.01 pm
Oil Mist Efficiency*	Up to 96% @ 2060 cfm	Up to 96% @ 4120 cfm	Up to 96% @ 6180 cfm
Odor Efficiency	Up to 90%	Up to 90%	Up to 90%
Number of Cells	1	2	3
Dimensions (LxWxH)**	(76 x 65 x 63) cm	(136 x 65 x 63) cm	(196 x 65 x 63) cm
Weight	54 Kg	88 Kg	120 Kg
Aluminum Cells	1 (16 Kg)	2 (32 Kg)	3 (48 Kg)
External Finish	Electrostatic Powder Coating	Electrostatic Powder Coating	Electrostatic Powder Coating
Pre Filter	Yes - Washable	Yes - Washable	Yes - Washable
Input Voltage (Power)	208-253 Vac 1 ph 60 Hz (50 W)	208-253 Vac 1 ph 60 Hz (75 W)	208-253 Vac 1 ph 60 Hz (105 W)
Detergent Tank	Yes (30Lts)	Yes (30Lts)	Yes (30Lts)
Level Sensor (Detergent)	Yes 100%, 50% y 10%	Yes 100%, 50% y 10%	Yes 100%, 50% y 10%
LED Operation Indicator	Yes on / fault / maint	Yes on / fault / maint	Yes on / fault / maint
Fan Interlocking	Yes (dual control) on/off	Yes (dual control) on/off	Yes (dual control) on/off
Airflow Sensor	Optional	Optional	Optional
Activated Carbon + UV Light Filter Bank	Optional	Optional	Optional
Notifications (Connectivity)	Yes (WiFi) email	Yes (WiFi) email	Yes (WiFi) email
External Display (User Interface)	Yes Touch Screen	Yes Touch Screen	Yes Touch Screen

\* May vary depending on the type of kitchen cooking.

\*\* Dimensions can be adjusted according to project requirements, may change without prior notice, and must be confirmed at the time of ordering.



Intelligent Self-Regulation



Multiple Sizes



Low Maintenance Cost

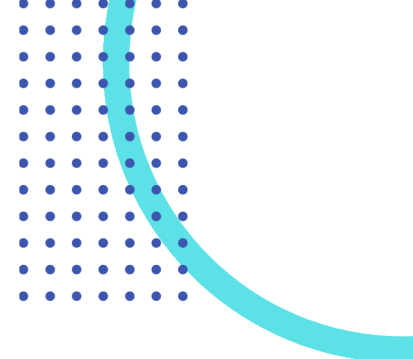


Certified HV Power Supply





# Technical Specifications



	AirChef 8000	AirChef 12000	AirChef 16000
Airflow	5600 - 11200 cfm	11200 - 16800 cfm	11200 - 22400 cfm
Static Pressure From	33 Pa / 0.13 inwg	33 Pa / 0.13 inwg	33 Pa / 0.13 inwg
Ionizer Voltage	12 a 14 KVdc	12 a 14 KVdc	12 a 14 KVdc
Collector Voltage	6 a 7 KVdc	6 a 7 KVdc	6 a 7 KVdc
Filtration Level	Merv 15	Merv 15	Merv 15
Particle Size	From 0.01 pm	From 0.01 pm	From 0.01 pm
Oil Mist Efficiency*	Up to 96% @ 8240 cfm	Up to 96% @ 12360	Up to 96% @ 16480
Odor Efficiency	Up to 90%	Up to 90%	Up to 90%
Number of Cells	4	6	8
Dimensions (LxWxH)**	(256 x 65 x 63) cm	(196 x 65 x 110) cm	(256 x 65 x 110) cm
Weight	150 Kg	216 Kg	290 Kg
Aluminum Cells	4 (64 Kg)	6 (96 Kg)	8 (128 Kg)
External Finish	Electrostatic Powder Coating	Electrostatic Powder Coating	Electrostatic Powder Coating
Pre Filter	Yes - Washable	Yes - Washable	Yes - Washable
Input Voltage (Power)	208-253 Vac 1 ph 60 Hz (125 W)	208-253 Vac 1 ph 60 Hz (210 W)	208-253 Vac 1 ph 60 Hz (250 W)
Detergent Tank	Yes (30Lts)	Yes (30Lts)	Yes (30Lts)
Level Sensor (Detergent)	Yes 100%, 50% y 10%	Yes 100%, 50% y 10%	Yes 100%, 50% y 10%
LED Operation Indicator	Yes on / fault / maint	Yes on / fault / maint	Yes on / fault / maint
Fan Interlocking	Yes (dual control) on/off	Yes (dual control) on/off	Yes (dual control) on/off
Airflow Sensor	Optional	Optional	Optional
Activated Carbon + UV Light Filter Bank	Optional	Optional	Optional
Notifications (Connectivity)	Yes (WiFi) email	Yes (WiFi) email	Yes (WiFi) email
External Display (User Interface)	Yes Touch Screen	Yes Touch Screen	Yes Touch Screen

\* May vary depending on the type of kitchen cooking.

\*\* Dimensions can be adjusted according to project requirements, may change without prior notice, and must be confirmed at the time of ordering.



Intelligent Self-Regulation



Multiple Sizes



Low Maintenance Cost



Certified HV Power Supply

